

# Parental expectations from health care providers of pediatric wards in tertiary care hospital on the basis of family-centered approach

Dr.Gangurde Prachi, Dr.Nandgaonkar Hemant

## Introduction

- Implementation of Family centred approach is required for better outcome of child health during hospitalization.
- For implementation of Family centred approach evaluation of parental expectation and present practice perspective is required.

## Aim

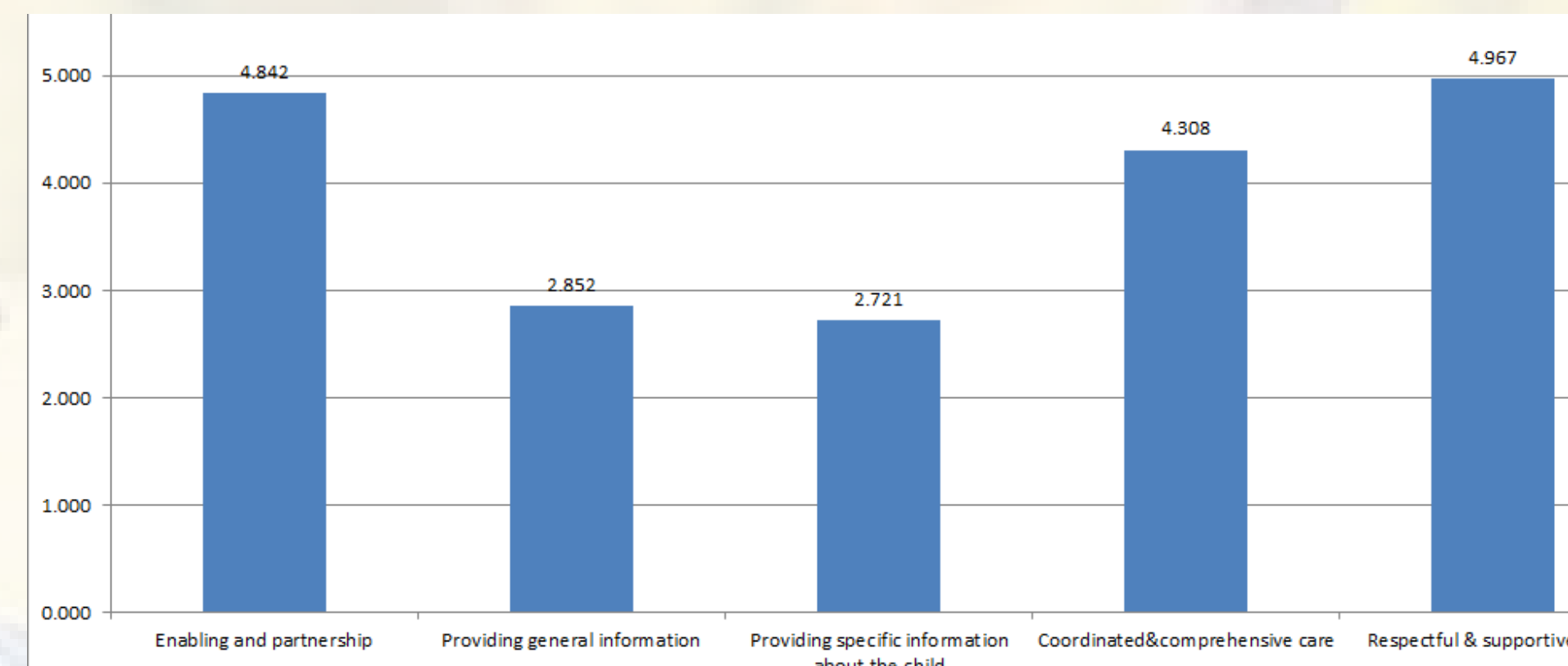
- To evaluate parental expectations from health care providers of pediatric wards in tertiary care hospital on the basis of Family - centred approach.

## Methodology

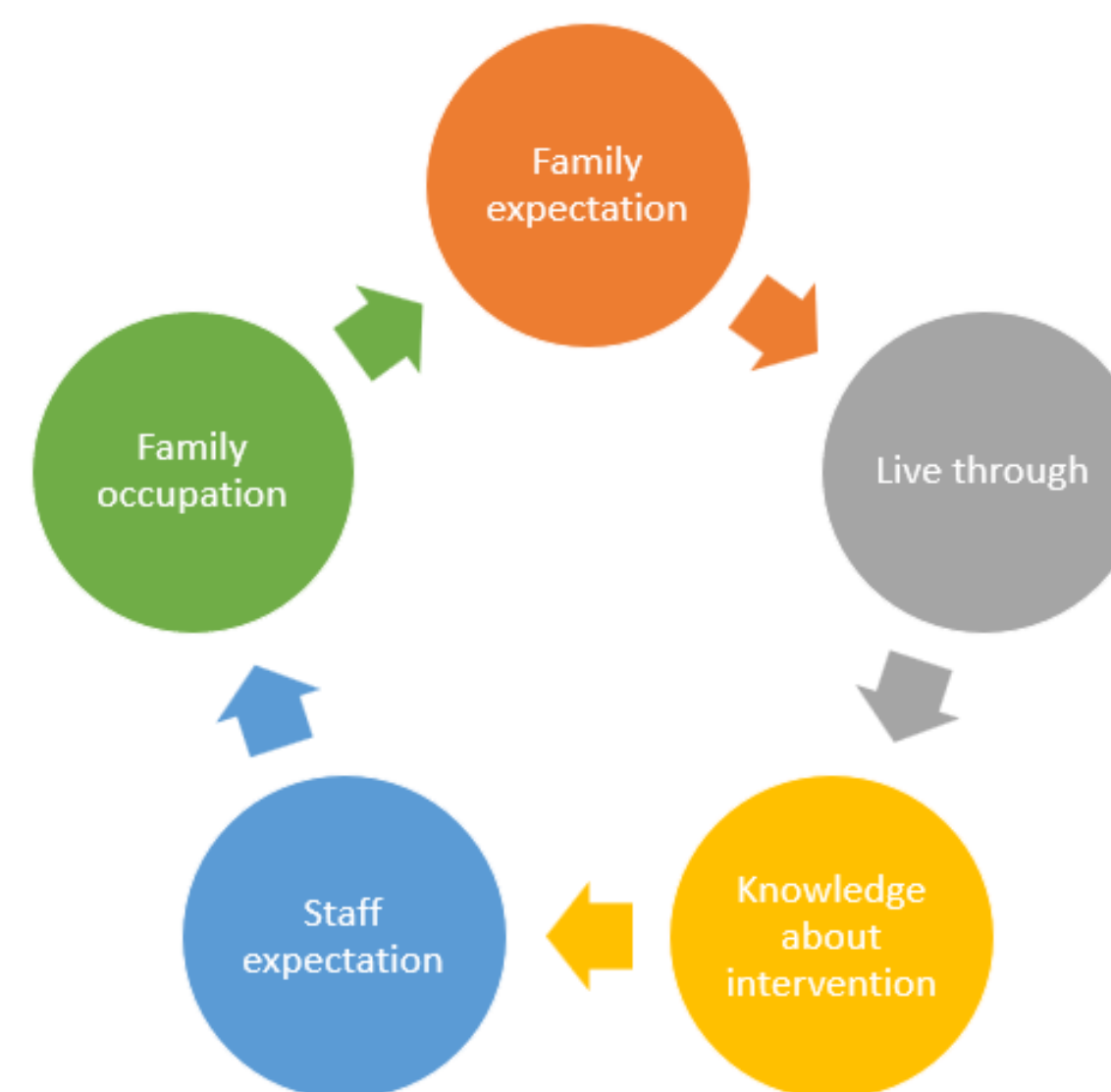
- Mixed method
- For parents of child admitted. in pediatric wards between age group of 3 to 12 years.

## Result

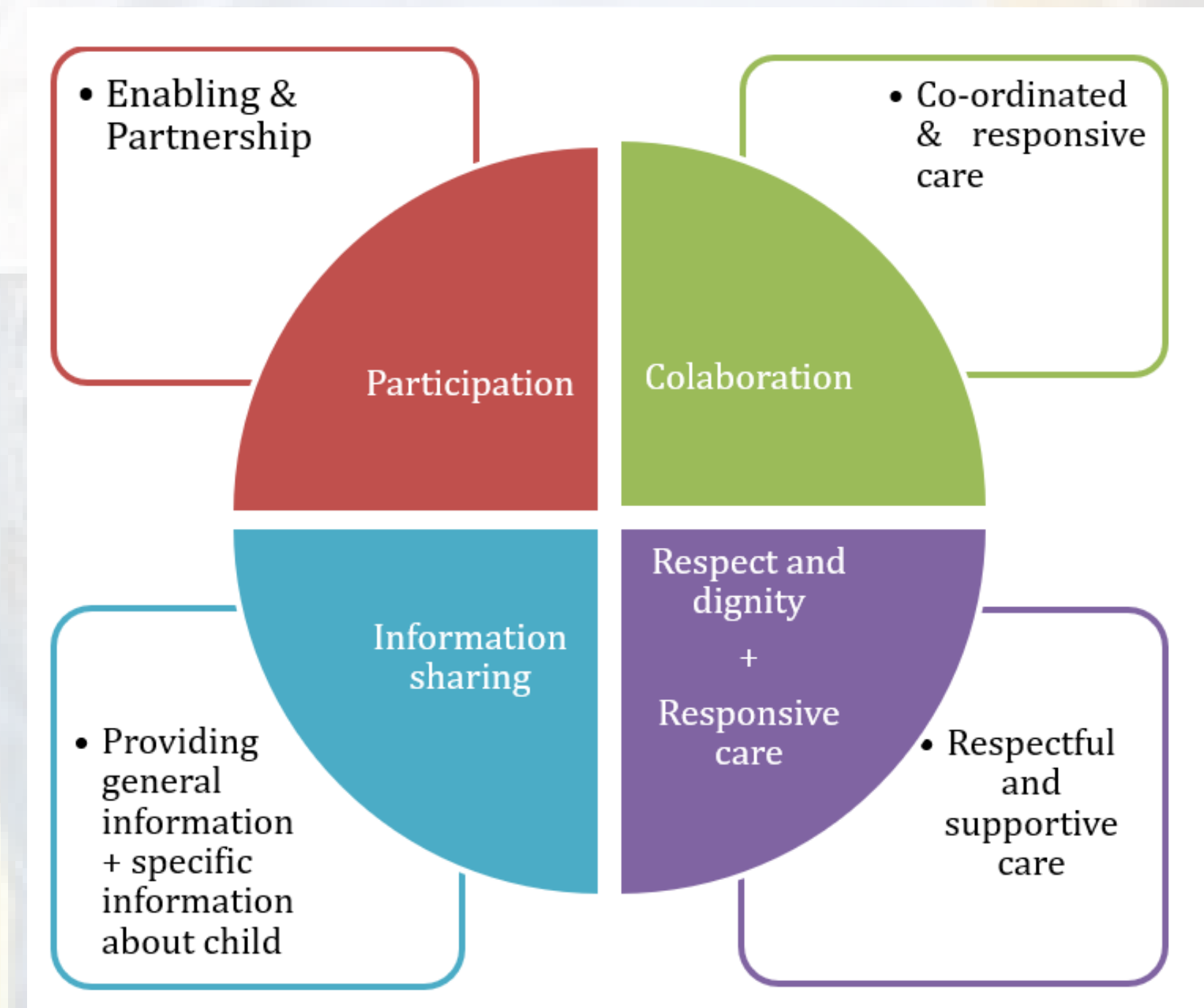
- 200 parents in quantitative (MPOC-56) and 85 for qualitative (in depth interview) participated in study.
- Intergroup comparison of each domain of MPOC-56 scale (quantitative part).



## Themes of qualitative analysis



## Correlation between Family centered care (FCC) principles of (Qualitative study) and Measure of process of care -56 (MPOC-56) of subcomponents (Quantitative study)-



## Conclusion

- For the family centred approach to be successful , health care faculty must be properly educated and management reforms must be implemented.

All authors have declared no conflict of interest.